

Customer first, quality assurance



CAIMEI MACHINERY MANUFACTURING (SHANGHAI) CO.,LTD

COMPANY PROFILE

Caimei Machinery Manufacturing (Shanghai)Co.,Ltd. was established in2011.Located in Fengxian Industrial Park Shanghai Province.It is a manufacturingcompany mainly engaged in hydraulic pumpshydraulic power unit,and hydraulic tools. Theproducts are widely used in municipal, electricpower, water conservancy, urban emergency.vehicle modification,petrochemical, environmen-tal protection, new energy, construction, andmany other fields

The company has obtained ISO9001 andCE certification.

We will continue to take customer needs asthe guide andprovide better products and ser-vices to domestic and foreign customers.Thank you for your trust and attention.



CAIMEI MACHINERY MANUFACTURING (SHANGHAI)CO.,LTD



CONTENTS

- Submersible pump----- 1
- Self priming pump----- 2
- Drainage pump station----- 3
- Drainage truck----- 4
- Diesel engine driven self-priming pump----- 5
- Diesel engine and gasoline engine pump ----- 7
- Diesel generator sets ----- 9
- variable frequency generator----- 11
- KOHLER Gasoline generator set----- 12
- silent gasoline generator set----- 13
- Diesel generator welding machine ----- 14
- Mobile Lighting Tower----- 16
- Hydraulic slurry pump (sewage pump) ----- 19
- Hydraulic sewage pump (self priming pump)----- 22
- Hydraulic axial flow pump (mixed flow pump) ----- 23
- Portable submersible pump ----- 25
- Portable hydraulic power unit----- 27
- Hydraulic power unit (G series)----- 29
- Hydraulic power unit(G series- Skid type)----- 30
- Intelligent drainage equipment----- 32
- Intelligent crawler slurry drainage equipment----- 34
- Hose Handler ----- 36
- Hydraulic tools----- 37

Submersible pump



Self priming pump



Drainage pump station



Water supply and drainage truck



Diesel engine driven self-priming pump

Number	Model	Flow m ³ /h	Head m	Efficiency %	Power KW	Speed r/min	NPSH m	Suction m	Self priming time s/5m
1	CMP-4SP	100	20	66.1	11	1500	2.5	8.5	60
2		100	25	60.6	15	1500	2.5	8.5	60
3		100	30	58.9	18.5	1500	2.5	8.5	60
4		100	40	68.1	22	1500	2.5	8.5	60
5		100	50	69	30	1500	2.5	8.5	60
6		100	60	69.7	37	1500	2.5	8.5	60
7		100	80	63.6	45	1500	2.5	8.5	60
8	CMP-6SP	200	18	66.3	18.5	1500	2.5	8.5	60
9		200	32	68.1	37	1500	2.5	8.5	60
10		200	50	65.4	55	1500	2.5	8.5	60
11		200	80	62.8	90	1500	2.5	8.5	60
12	CMP-8SP	300	15	69	22	1500	3.0	8.5	60
13		300	20	72.9	30	1500	3.0	8.5	60
14		300	30	66.8	45	1500	3.0	8.5	60
15		300	50	71.2	75	1500	3.0	8.5	60
16		400	15	74.3	30	1500	3.0	8.5	60
17		400	20	72.7	37	1500	3.0	8.5	60
18		400	30	73.6	55	1500	3.0	8.5	60
19		400	40	72.7	75	1500	3.0	8.5	60
20		400	48	70.4	90	1500	3.0	8.5	60
21		400	55	66.7	110	1500	3.0	8.5	60
22		400	60	69.8	132	1500	3.0	8.5	60
23		500	15	68.1	37	1500	3.0	8.5	60
24		500	20	68.1	45	1500	3.0	8.5	60
25		500	30	69.3	75	1500	3.0	8.5	60
26	500	40	71.2	90	1500	3.0	8.5	60	
27	CMP-10SP	600	13	64.1	37	1500	4.0	8.5	60
28		600	16	67.6	45	1500	4.0	8.5	60
29		600	27	68.4	75	1500	4.0	8.5	60
30		600	40	76.9	110	1500	4.0	8.5	60
31		600	55	69.2	160	1500	4.0	8.5	60
32	CMP-12SP	800	13	74.1	45	1500	5.0	8.5	60
33		800	16	74.6	55	1500	5.0	8.5	60

Number	Model	Flow m ³ /h	Head m	Efficiency %	Power KW	Speed r/min	NPSH m	Suction m	Self priming time s/5m
34	CMP-12SP	800	20	68.4	75	1500	5.0	8.5	60
35		800	32	74.1	110	1500	5.0	8.5	60
36		800	42	74.6	160	1500	5.0	8.5	60
37		1000	12	71.2	56	1500	5.0	8.5	60
38		1000	16	69.9	75	1500	5.0	8.5	60
39		1000	20	68.4	90	1500	5.0	8.5	60
40		1000	25	71.2	110	1500	5.0	8.5	60
41		1000	30	72.9	132	1500	5.0	8.5	60
42		1000	35	72.9	160	1500	5.0	8.5	60
43		1200	9	72.8	45	1500	5.0	8.5	60
44		1200	11	76.9	55	1500	5.0	8.5	60
45	CMP-14SP	1200	13	66.7	75	1500	5.0	8.5	60
46		1200	17	72.7	90	1500	5.0	8.5	60
47		1200	22	76.9	110	1500	5.0	8.5	60
48		1200	26	75.8	132	1500	5.0	8.5	60
49		1200	30	72.1	160	1500	5.0	8.5	60
50		1200	35	67.3	200	1500	5.0	8.5	60
51		1500	11	74.3	75	1500	5.0	8.5	60
52		1500	15	74.3	90	1500	5.0	8.5	60
53		1500	20	72.9	132	1500	5.0	8.5	60
54		1500	25	75.1	160	1500	5.0	8.5	60
55		1500	30	72.1	200	1500	5.0	8.5	60
56	1500	35	76.5	220	1500	5.0	8.5	60	
57	CMP-16SP	1800	12	63	110	1500	5.0	8.5	60
58		1800	15	65.6	132	1500	5.0	8.5	60
59		1800	18	64.9	160	1500	5.0	8.5	60
60		1800	24	69.2	200	1500	5.0	8.5	60
61		1800	30	68.2	250	1500	5.0	8.5	60
62		2000	11	64.1	110	1500	5.0	8.5	60
63		2000	15	68	132	1500	5.0	8.5	60
64	2000	22	68.1	200	1500	5.0	8.5	60	
65	2000	30	70.5	280	1500	5.0	8.5	60	
66	CMP-20SP	3000	13	69.2	160	1500	5.0	8.5	60
67		3000	18	70.5	220	1500	5.0	8.5	60
68		3000	22	70.2	250	1500	5.0	8.5	60
69		3000	30	69.6	320	1500	5.0	8.5	60

Diesel engine driven self-priming pump



The self priming vacuum pump group is designed with a clever combination of strong self priming automatic control system, featuring high suction head, fast self priming, dry wear resistance, self priming start without the need for irrigation, and automatic control. It reduces self priming time by 60%, improves work efficiency by 50%, increases suction head height by 30%, prolongs service life, and achieves functions such as durability, stability, practicality, and economy in use. It can be widely used in flood control, drainage, and other fields Fire protection and other occasions.

Adopting a double suction structure, water enters both ends of the impeller at the same time and is discharged in the middle without axial tension, so there is no upper limit for flow and diameter. The normal diameter is DN100~DN600, and the flow rate is 100~3000 cubic meters, supporting non-standard customization.



DIESEL (GASOLINE) WATER PUMP 4 "DP40 DIESEL (GASOLINE) WATER PUMP



Model		DP20	DP30	DP40	DP60E	DWB30	DP15H
WATER PUMP	Suction, discharge port diameter [mm(in)]	50(2"),50(2")	80(3"),80(3")	100(4"),100(4")	150(6"),150(6")	80(3"),80(3")	40(1.5"),40(1.5")
	Cont.head (m)	26	28	31	15	25	60
	Self-priming time (s/4m)	70	120	180	200	120	30
	Max. suction head (m)	8			6	8	7
	Cont.capacity (m3/hr)	36	50	96	180	45	18
ENGINE	Engine model	HR170F	HR178F	HR186FA	HR192FD	HR178F	HR178F
	Speed (rpm)	3600			3200	3600	
	Type	Single-cylinder, vertical, 4-stroke air-cooled diesel engine					
	Displacement (cc)	211	296	418	498	296	296
	Bore*stroke (mm)	70×55	78×62	86×72	92×75	78×62	78×62
	Starting system	Recoil or Electric					
	Fuel tank capacity (L)	2.5	3.5	5.5	12.5	3.5	3.5
STANDARD FEATURES	Connector of infall, Connector of outfall	yes	yes	yes	yes	yes	yes
	Filter	yes	yes	yes	yes	yes	yes
	Seal ring	yes	yes	yes	yes	yes	yes
	Hoop	yes	yes	yes	yes	yes	yes
DIMENSIONS	Dimension(L*W*H) (mm)	500×420×530	570×470×580	670×500×640	780×540×840	825×535×675	570×470×580
	Gross weight (kg)	36	47	68	141	85	45
	20FT	236	192	105	56	84	192

DIESEL (GASOLINE) WATER PUMP

6-INCH DP150LE DIESEL ENGINE (GASOLINE ENGINE) WATER PUMP



Model		DP20H	DP30H	DP15HCl	DP20HCl	DP30HCl	DP30HHCl	DP30DHCl	
WATER PUMP	Suction, discharge port diameter [mm(In)]	50(2"), 50(2")	80(3"), 80(3")	50(2"), 40(1.5")	50(2"), 50(2")	80(3"), 80(3")	80(3"), 80(3")	100(4"), 80(3")	
	Cont. head (m)	50	70	75	90	75	105	60	
	Self-priming time 自吸时间 (s/4m)	30	30	30	30	30	30	30	
	Max. suction head (m)	8							
	Cont. capacity (m ³ /hr)	23	38	28	35	47	42	90	
ENGINE	Engine model	HR186FA	HR192FD	HR178F	HR186FA	HR186FA	HR188FA	HR192FD	
	Speed (rpm)	3600							
	Type	Single-cylinder, vertical, 4-stroke air-cooled diesel engine							
	Displacement (cc)	418	498	296	418	418	456	498	
	Bore*stroke (mm)	86×72	92×75	78×62	86×72	86×72	88×75	92×75	
	Starting system	Recoil or Electric							
	Fuel tank capacity (L)	5.5/12.5	5.5/12.5	3.5/12.5	5.5/12.5	5.5/12.5	5.5/12.5	5.5/12.5	
STANDARD FEATURES	Connector of infall, Connector of outfall	yes	yes	yes	yes	yes	yes	yes	
	Filter	yes	yes	yes	yes	yes	yes	yes	
	Seal ring	yes	yes	yes	yes	yes	yes	yes	
	Hoop	yes	yes	yes	yes	yes	yes	yes	
DIMENSIONS	Dimension (L*W*H) (mm)	605×485×600	605×485×600	445×465×565	500×485×615	540×485×615	540×485×615	560×485×615	
	Gross weight (kg)	57	59	40	65	82	82	93	
	20FT	120	120	260	132	120	120	120	

DIESEL GENERATOR SETS

GENSET MODEL	POWER (KW)	CYL.NO	BORE/STROKE (MM)	DISP. (L)	CAPACITY OF ENGINE OIL(L)	WEIGHT (KG)	OVERALL SIZE L X B X H (MM)
CM-20GF	20	4L	102/120	3.9	10.9	700	1600*710*1300
CM-30GF	30	4L	102/120	3.9	10.9	760	1650*750*1300
CM-40GF	40	4L	102/120	3.9	10.9	800	1800*760*1300
CM-50GF	50	4L	102/120	3.9	10.9	850	1800*760*1300
CM-75GF	75	6L	102/120	5.9	16.4	900	2000*850*1350
CM-100GF	100	6L	102/120	5.9	16.4	1200	2250*850*1400
CM-120GF	120	6L	102/120	5.9	16.4	1300	2300*850*1400
CM-150GF	150	6L	114/135	8.3	27.6	2100	2500*850*1450
CM-200GF	200	6L	125/147	10.8	36.7	2600	3000*980*1760
CM-250GF	250	6L	125/147	10.8	36.7	2900	3100*1100*1760
CM-300GF	300	6L	140/152	14	38.6	2850	3200*1150*1780
CM-350GF	350	6L	140/152	14	38.6	3000	3300*1250*1850
CM-400GF	400	6L	159/159	19	50	3400	3400*1250*1970
CM-450GF	450	6L	159/159	19	50	3800	3700*1600*2150
CM-500GF	500	6L	159/159	19	50	4100	4000*1600*2150
CM-550GF	550	6L	159/159	19	84.4	6300	4300*1600*2300
CM-600GF	600	12V	159/159	38	135.1	7650	4500*1600*2300
CM-650GF	650	12V	159/159	38	135.1	8300	4500*1700*2400
CM-700GF	700	12V	159/159	38	135.1	8000	4500*1700*2400
CM-800GF	800	12V	159/159	38	135.1	8000	4500*1900*2450
CM-900GF	900	12V	159/159	38	135.1	9500	5100*2280*2500
CM-1000GF	1000	12V	159/159	37.7	170.3	10500	5100*2280*2500

DIESEL GENERATOR SETS

Diesel generator set optional configuration



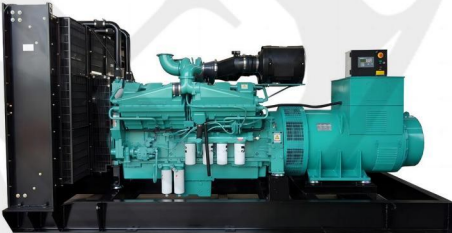
ATS CONTROLLER



ATS CONTROLLER



Fixed rainproof box



Standard type



Mobile trailer



Fixed silent type



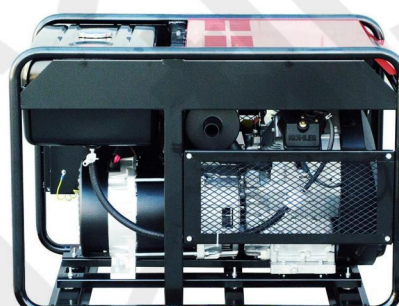
Mobile trailer silent type

Variable frequency generator



Model	CM950i	CM1200iS	CM2200iS	CM3500iE	CM6500iE
Rated power(kW)	0.7	1.0	2.0	3.0	5.5
Max power(kW)	0.8	1.2	2.2	3.5	6.0
Rated frequency(HZ)	50				
Rated voltage(V)	220				
Rated current(A)	3.2	4.5	9	13.6	23.7
Rated DC(V/A)	12V/3A	12V/4A	12V/8.3A	12V/8.3A	12V/8.3A
Power factor(COSφ)	1.0				
THD (%)	2%				
Phase	1-Phase				
Generator model	0.7kW/50HZ	1.0kW/50HZ	2.0kW/50HZ	3.0kW/50HZ	5.5kW/50HZ
Number of poles	2				
Excitation mode	Self-excited constant voltage(AVR)				
Insulation grade	H				
Engine type	single cylinders,Air-cooled,4-stroke,gasoline engine				
Displacement(ml)	40	60	114	150	389
Lubrication method	Splashing				
Starting method	Recoil start /Electric start				
Lubrication capacity(L)	0.3	0.52	0.52	0.9	1.1
Lube.brand	SAE15W-40				
Structure type	Low silent type				
Noise level/dB(A)	58				62
Fuel tank capacity(L)	2.1	3.0	4.1	7	18.5
(h)	3.8	4.8	3.2	3.8	4.5
size(mm)	395*209*355	448*236*392	525x282x440	614*341*506	750x537x630
Packing size(mm)	425*230*380	480*255*425	550x320x490	640*360*540	780x570x650
Net weight(Kg)	9.0	13.5	22.0	35.0	89.0
Gross weight(Kg)	10.2	15.0	24.5	38.0	98.0
20GP/40GP/40HQ	750/1500/1830	540/1100/1320	300/612/765	255/520/610	84/180/240

KOHLER Gasoline generator set



Model	KL-1100	KL-3100	KL-1130	KL-3200	KL-1160	KL-3300	KL-1200	KL-3400
Rated voltage	220V	380V	220V	380V	220V	380V	220V	380V
Hz	50		50		50		50	
Maximum power	11.0KW	13.5KVA	13.0KW	16.5KVA	16KW	20KVA	22KW	27KVA
Rated power	10.0KW	12.5KVA	12.0KW	15.0KVA	15KW	18KVA	20KW	25KVA
Rated current	45A	18A	55A	22A	69A	27A	90A	36A
Power factor	1	0.8	1	0.8	1	0.8	1	0.8
Insulation level	H							
Engine type	Air cooled four stroke OHV dual cylinder gasoline engine							
Maximum power	CH640, 624cc		CH730, 725cc		CH34, 999cc		CH38, 999cc	
	20.5HP/3600PRM		23.5HP/3600PRM		34HP/3600PRM		38HP/3600PRM	
Rtart mode	Electric start							
Fuel	90 # or above unleaded gasoline							
oil capacity L	1.8		1.9		2.85		2.85	
Fuel tank capacity L	37		37		55		55	
Standard configuration	Oil alarm, voltage indicator, current indicator, operating schedule, fuel indicator							
Battery capacity	12V36AH							
size[L x W x H]	930x610x650mm		930x610x650mm		1020x670x700mm		1020x670x700mm	
Weight[KG]	150		170		190		200	
Fuel consumption	4.0L/H		4.7L/H		6L/H		7L/H	
Run time[H]	8.8		7.8		9		8	

10KW~30KW silent gasoline generator set



Model	CM10GT	CM15GT	CM20GT	CM25GT	CM30GT
Rated Output(KW)	10	15	20	25	30
Max Output(KW)	12	16.5	22	27.5	33
Rated Current(A)	22(36)/52(100)	27(45)/65(125)	29(48)/87(167)	36.1(60.1)/109(208)	43(72)/130(250)
Frequency(Hz)	50/60				
Rated Voltage(V)	400 (240) /230 (120)				
Generator Type	Synchronous Motor				
Voltage Regulator	AVR				
Rated Speed(r/min)	3000/3600				
Phase	3-Phase/Single-phase				
Power Factor (cosφ)	0.8/1				
Structure	Box Type				
Insulation Class	F				
Engine Model	CM465F1			CM491F1	
Speed Model	Electronic Governor				
Tank Capacity(L)	25			37	
Startup System	12V Electric Start				
Ignition Way	Inductive Ignition				
Fuel Type	90 # or above unleaded gasoline				
Engine Type	In-line、Straight、Four-stroke、Four-cylinder、Water-cooled、Single Overhead Camshaft、8Valve				
Oil Type	10W/30 SF Engine Oil(Summer 15W/40W; Winter10W/30W)				
Oil Capacity(L)	3.5			4.2	
Noise(dB)	≤73dBA/7m				
Dimension(mm)	1130×720×680			1480×780×1050	
CTN Dimension(mm)	1220×780×1000			1600×830×1300	
N.W.(Kg)	275	280	305	470	490

Diesel generator welding machine

Product parameters						
Model	CMH300D	CMH400D	CMH500D	CMH600D	CMH800S	CMH1000S
Structure type	Fixed mute type or Mobile mute type					
Rated power	10kW	15kW	20kW	20kW	13.4kW×2	20kW×2
Rated current	300A	400A	500A	600A	380A×2	480A×2
Rated voltage	35.2V	35.2V	35.2V	35.2V	35.2V	35.2V
No-load voltage	70V	70V	70V	70V	85V	85V
Rated usage rate	60%	60%	60%	60%	60%	60%
Current adjustment range	30~300A	30~400A	30~500A	30~600A	(60~400)A×2	(60~500)A×2
No-load voltage	25~38V	25~38V	25~38V	25~38V	22~43V	22~43V
Rated usage rate	80%	80%	80%	80%	80%	80%
Rated current	280A	380A	480A	580A	350A×2	480A×2
Maximum output power	20kW	25kW	30kW	35kW	45kW	60kW
Rated speed	1500rpm					
Exhaust volume	2.75L	3.12L	3.61L	3.61L	3.9L	3.9L
Fuel	Diesel					
Cooling mode	Water cooled					
Protection level	IP23					
Insulation class	H					
Dimensions (L*W*H) mm	1850*900*1150		2000*900*1350	2100*1000*1560	2100*1000*1560	2300*1000*1560
Weight	850kg	950kg	1150kg	1200kg	1200kg	1350kg

Diesel generator welding machine

1、

According to the welding requirements pipeline construction in China, the welding performance is significantly improved

2、

With automatic start-stop function of energy-saving devices, the idle solenoid valve reduces fuel consumption

3、

It has the function of single handle welding and double handle welding at the same time without interfering with each other.

4、

Simple operation, low failure rate, good durability, flexible and lightweight

5、

The welding machine has strong continuous operation ability, and can continue to operate continuously for 24 hours without stopping.

6、

Double handle welding and cutting at the same time without interference, welding and alternating current can be used at the same time

7、

With high and low current selection switch, no need to stop and tedious process of plugging and unplugging the quick plug.

8、

Equipped with oil alarm, water temperature alarm, battery alarm, oil alarm prompt function.

9、

The instrument is complete, equipped with a sensor type oil indicator, digital ammeter, voltmeter, timer, current adjustment knob, arc blowing force adjustment knob, etc.



Fixed mute type



Two wheel single axle, trailer, silent type



Four wheel dual axle, trailer, silent type

Mobile Lighting Tower

Mobile Lighting Tower		
Tower Light Model: CMT-4M,CMT-4L,CMT-4H,CMT-6L,CMT-6M,CMT-6H,CMT-4Y,CMT-6Y,CMT-4QY,CMT-6QY		
Mast height		9M
working height		10m
Lamp power		4*1000W
Total illumins		440000lm
Mast operate		90
Mast rotation		360°
Wind resistance		< 20M/S
Mast tilt		<10 degree
Alternator		
Alternator type		Brushless self-excitation withAVR
Frequency		50/60Hz
Rated voltage		220V
Phase		Single- Phase
Power factor		0.95
Isulation calss		H
Engine		
Engine type		Four stroke three cylinder water-cooled diesel engine
Engine brand model		YANGDONG、 Changchai、 Kubota、 YANMAR、 Perkins YSAD380G、 3M78、 D1150-BG、 3TNV76、 403D-11G
rated power		6~10Kw
Aspiration		Nature
Emission standard		Stage2/Tier4
Rotational speed		1500/1800rpm
Fuel tank capacity	75L	bottom tank
Starting model		E-motor
Nosiel level		78 db(A)
Trailer		
Hitch		Ring or Ball
Tyre Diameter		520MM
Stablizing Legs		4 pcs,
Suspension System		Leaf Spring Axle
Taillights		With
speed limit		35KM/H
Controller		
"Smargen HGM4010N		
Weight&Packing		
Net Weight		1150 kg
Gross Weight		1250 kg
Over-Size		2500x1450x2400 MM
working size		3580*2970*10050 MM
Options		
Cold weather starting kit	Power input socket	Handbrake
AL-KO suspension system	SMARGEN ALC704	

Mobile Lighting Tower

Mast Height: 5M/7M/9M

Lamp Type: LED/Metal Halide Lamp

Lift winch Type: Manual/Electric

Generator: Diesel/Gasoline



Mobile light towers go WHEREVER you need them. These mobile units are offered in a variety of configurations with options to meet every need. The tubular steel frame, powder-coated enclosure and wide body design are built to stand up to the harshest of conditions. That includes remote locations and rugged terrain. These vertical mast light towers come standard with an electric or manual winch for easy deployment. Standard analog controls are easy to use and allow for individual light operation. We lead the industry with innovative and revolutionary light tower solutions. Easy to setup, operate and maintain, our light towers provide maximum power in a minimal footprint. With extended run times and service intervals, LED or metal halide safety features, innovative engine technologies, our products can be trusted to maximize uptime and return on your investment.



Mobile Lighting Tower



Structural characteristics:

1. Lighting performance: The lamp panel adopts four 1000W Philips high-efficiency energy-saving metal halide lamp holders, with an average brightness of 110000 lumens per lamp. The lighting brightness is high, the coverage range is large, and the lighting distance is considered, especially suitable for outdoor large-scale work lighting.
2. Lifting performance: The lighthouse lifting rod is made of high-strength alloy material and can achieve automatic lifting adjustment, with a maximum lifting height of 9 meters; The four lamp holders can adjust the illumination angle from top to bottom, left to right, so that the light covers the entire work site.
3. Working hours: Powered by Perkins diesel generator set, capable of working continuously for more than 40 hours; In places with mains power, 220V AC power can also be connected for long-term lighting.
4. Operability: Adopting hydraulic lifting rods to achieve fully automatic lifting, easy to operate, safe and reliable; The intelligent control box controls the opening and closing of lights, as well as various protective devices.
5. Flexible and convenient: With optimized structural design, it is easy to move and transport, connected to a trailer, and can be easily moved to any construction or emergency site.
6. Working environment: The lighting fixtures are made of advanced metal materials, which have a certain degree of pressure resistance and stability, and are suitable for working in various harsh environments and weather conditions.

HYDRAULIC SLURRY PUMP (SEWAGE PUMP)

PRODUCT DESCRIPTION

Product Model: CMSP
Material: cast steel/stainless steel (304)/duplex steel (2205)
Parameter : Flow rate 18–430m³/h
Head 10–40m (Accept product customization requirements)



- Light weight
- High head



- Simple operation
- Fast operation



PRODUCT FEATURES

1. CMSP hydraulic slurry pump (sewage pump) is directly driven by the hydraulic power pack system, without the risk of leakage.
2. The vortex design of the pump impeller has the characteristics of longer service life, high reliability, and the ability to extract large solid particle.
3. The pump body is light in weight and easy to move.
4. With hydraulic quick connector, easy to operate.

HYDRAULIC SLURRY PUMP (SEWAGE PUMP)

FIELDS OF PRODUCT APPLICATION

Municipal emergency repair and drainage, urban flood control and drainage, inspection well and sewer pipe cleaning and sewage discharge, construction site drainage: water intake from rivers, ditches, and lakes for drought resistance, fire fighting, water supply, sea water extraction, explosion-proof areas, etc.



INSTALLATION METHOD

- Mobile installation
- Fixed installation



PARAMETER TABLE

Model	CMSP40	CMSP50	CMSP65	CMSP80	CMSP80/A	CMSP80/B	CMSP80/C	CMSP100/A	CMSP100/B	CMSP100/C	CMSP100/D
Flow (m ³ /h)	18-25	20-34	20-53	65-120	65-120	65-120	65-120	120-230	120-230	120-230	120-230
Head (m)	10-15	10-15	10-15	10-15	10-15	10-25	10-30	10-25	10-30	10-35	10-40
Outlet Diameter (in)	1.5	2	2.5	3	3	3	3	4	4	4	4
Weight (kg)	6.5	12	12.5	15	21	21	21	29	29	29	29
Horsepower (hp)	13	13	13	13	13	18	23	18	23	27	35
Pressure (bar)	145	145	145	145	155	155	155	155	155	155	155
Hydraulic Flow Rate (lpm)	20-30	20-30	20-30	20-30	20-30	30-40	40-50	30-40	40-50	50-60	60-80
Particle Size (mm)	12	16	23	25	58	58	58	65	65	65	80
Pump Size (mm)	220*130*300	270*180*380	270*180*380	290*200*420	370*210*430	370*210*430	370*210*430	400*210*480	400*210*480	400*210*480	400*210*480

(If you have special requirements on material, flow, head requirements, we can provide you with customized products)

HYDRAULIC SLURRY PUMP (SEWAGE PUMP)

PARAMETER TABLE

Model	CMSP100/M	CMSP150/A	CMSP150/B	CMSP150/C	CMSP200/A	CMSP200/B	CMSP200/C	CMSP200/D
Flow (m ³ /h)	280-310	280-310	280-310	280-310	300-350	320-380	350-400	380-430
Head (m)	10-35	10-30	10-35	10-30	8-25	8-25	10-25	10-25
Outlet Diameter (in)	4	6	6	6	8	8	8	8
Weight (kg)	32	48	48	48	56	56	56	56
Horsepower (hp)	45	45	45	45	65	75	80	90
Pressure (bar)	165	65	165	165	180	180	180	180
Hydraulic Flow Rate (lpm)	80-120	80-120	80-120	80-120	80-120	80-120	80-120	80-120
Particle Size (mm)	80	85	85	85	100	100	100	100
Pump Size (mm)	400*210*480	420*260*480	420*260*480	420*260*430	480*260*510	480*260*510	480*260*510	480*260*510

(If you have special requirements on material, flow, head requirements, we can provide you with customized products)



HYDRAULIC SEWAGE PUMP (SELF PRIMING PUMP)

Hydraulic sewage pump (self-priming pump) is a common equipment that uses hydraulic motor to directly drive the pump shaft of self-priming sewage pump to pump, discharge sewage or clean water. Suitable for municipal, highway and bridge, sewage treatment, emergency flood prevention and other conditions.



PRODUCT FEATURES

It has the characteristics of self-priming sewage pump: quick water supply, large diameter of particles passing through, simple maintenance .At the same time, it has the characteristics of hydraulic products: small size, wide application range, convenient operation, stable work and easy speed regulation.

PRODUCT PARAMETERS

Model: CMYZS	Flow (m ³ /h): 100~3000
Head (m): 8~55	Range(m): 5.5~8.5
Sealing: Mechanical seal	Pressure(Mpa): 15~35
Outlet Diameter(in): DN50~DN500	
Import and export: flange (can add quick joint)	
Material: gray iron, nodular cast iron, stainless steel 304 stainless steel 316, bronze optional	

HYDRAULIC AXIAL FLOW PUMP (MIXED FLOW PUMP)

Hydraulic axial flow pump (mixed flow pump) is optimized and improved on the basis of electric portable submersible pump technology combined with hydraulic motor and hydraulic power unit. This series of hydraulic axial flow pumps (mixed flow pumps) adopts the structural design of water inlet and outlet above, and the hydraulic motor is located at the bottom of the pump, which makes the structure more stable.

PRODUCT DESCRIPTION



Product Model: CMQWP
Material: cast steel/stainless steel (304)/duplex steel (2205)
Parameter : Flow rate 380-12600m³/h
Head 5-14m (Accept product customization requirements)

PRODUCT FEATURES



1. CMQWP hydraulic axial flow pump (mixed flow pump) is directly driven by the hydraulic power station system, without the risk of leakage.
2. The pump impeller adopts axial flow or semi-open design, which has small volume, large flow rate and high passing rate of impurities.
3. The pump body is light in weight and easy to move.
4. With hydraulic quick connector, easy to operate.



HYDRAULIC AXIAL FLOW PUMP (MIXED FLOW PUMP)



FIELDS OF PRODUCT APPLICATION

Municipal emergency repair and drainage, urban flood control and drainage, inspection well and sewer pipe cleaning and sewage discharge, construction site drainage: water intake from rivers, ditches, and lakes for drought resistance, fire fighting, water supply, sea water extraction, explosion-proof areas, etc.

INSTALLATION METHOD

- Mobile installation
- Fixed installation



PARAMETER TABLE

Model	Flow (m³/h)	Head (m)	Outlet Diameter (in)	Weight (kg)	Horsepower (hp)	Pressure (bar)	Hydraulic Flow (lpm)	Pump Size (mm)
CMQWP200/H	380	14	8	27	35	172	60-80	210*280*520
CMQWP200/B	500	10	8	18	35	172	60-80	210*280*520
CMQWP200/Z	600	10	8	59	35	172	60-80	350*340*740
CMQWP200/C	600	12	8	59	56	172	60-80	350*340*740
CMQWP250	600-800	10	8	59	56	172	60-80	350*340*740
CMQWP300H	1000-1200	8	12	49	80-90	190	160-180	350*330*700
CMQWP300G	1200-1500	8	12	49	80-90	190	160-180	350*330*660
CMQWP300D	1500-1800	8	12	49	80-90	190	180-200	350*330*660
CMQWP400	2160	6	16	-	120-130	-	-	*Remark These are non-standard products Material: aluminum alloy/cast steel/alloy steel
CMQWP500	3600	7	20	-	180-200	-	-	
CMQWP600	7200	5	32	-	300-320	-	-	
CMQWP1000	12600	6	40	-	550-570	-	-	

WQP is an ultra-light anti-axial flow submersible sewage pump. It is a new generation of pump products successfully developed on the basis of introducing advanced technology at home and abroad, combined with the use characteristics of domestic water pumps. It has remarkable energy-saving effects, small size, light weight, Features such as high efficiency. The impeller adopts a special anti-axial flow rotary vane structure, which has the characteristics of light weight, large flow rate and high efficiency. It also adopts a special overall stainless steel material or a combination of aluminum alloy and stainless steel, which not only has the function of light weight, but also has wear resistance, durable features.

Compared with submersible pumps of the same power, the weight of this series of pumps is reduced by about 80%, and the volume is reduced by about 75%. The water outlet part of the pump is connected with a quick-loading head, which can be connected with a general-purpose fire hose; it has the function of rapid application on site, and the use speed is increased by about 80%. The hydraulic performance of the pump is advanced and mature, and all the indicators of the product have reached the relevant standards after testing.

PRODUCT DESCRIPTION

Product Model: HSQGP
Material: Stainless steel, aluminum alloy
Parameter : Flow rate 150–1000m³/h
Head 8–30m (Accept product customization requirements)

FIELDS OF PRODUCT APPLICATION

Municipal emergency repair and drainage, urban flood control and drainage, inspection well and sewer pipe cleaning and sewage discharge, construction site drainage: water intake from rivers, ditches, and lakes for drought resistance, fire fighting, water supply, sea water extraction, explosion-proof areas, etc.



PORTABLE SUBMERSIBLE PUMP

PRODUCT FEATURES

1. The pump adopts the outlet structure in the middle of the motor, which effectively protects the cables from being crushed.
2. Spring-type stainless steel sealed plastic handle, the pump can be lifted during use, and can be restored to its original position when not in use, does not take up space and is not easy to damage.
3. It is controlled by high-speed permanent magnet frequency conversion dry compound motor and special controller, which is about 80% lighter in weight and about 75% smaller in volume than submersible pumps of the same power. The water outlet part of the pump is connected by a quick-fit joint, which has the function of rapid application on site.
4. According to the needs of users, it can be equipped with a fully automatic safety protection control cabinet to monitor the water leakage, electric leakage, overload and over temperature of the pump, so as to ensure the reliable and safe operation of the pump.
5. Equipped with external buoys, it can rise and fall freely according to the water level to drain water.
6. The whole pump is made of special stainless steel and aluminum alloy, which has the characteristics of light weight, wear resistance and durability.



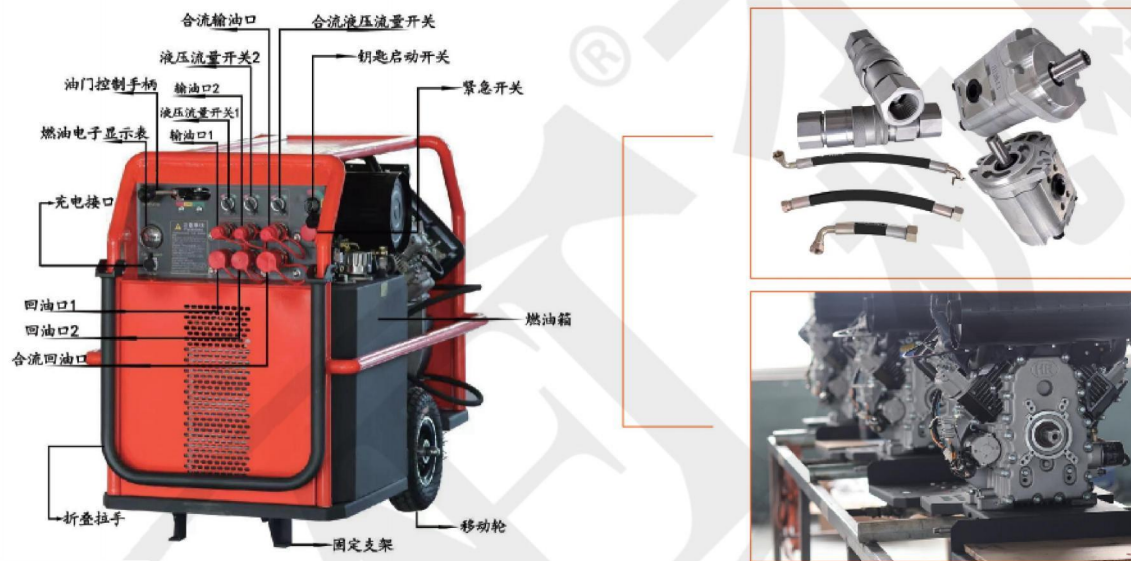
PARAMETER TABLE

Model	Flow (m ³ /h)	Head (m)	Outlet Diameter (in)	Weight (kg)	Power (kw)	Speed (rpm)	Pump Size (mm)
WQP250-8-11	250	8	6	21	11	0-5000	520*220*220
WQP440-9-18.5	440	9	8	30	18.5	0-5000	570*250*280
WQP500-10-22	500	10	8	35	22	0-5000	570*250*280
WQP500-12-27	500	12	8	43	27	0-5000	570*250*280
WQP150-30-22	150	30	8	30	22	0-5000	580*230*230
WQP300-22-30	300	22	8	45	30	0-5000	570*220*220
WQP600-9-25	600	9	8	45	25	0-5000	310*310*830
WQP500-13-30	500	13	10	45	30	0-5000	570*220*220
WQP600-13-37	600	13	10	59	37	0-5000	570*220*220
WQP800-10-37	800	10	10	61	37	0-5000	825*280*280
WQP1000-10-45	1000	10	12	65	45	0-5000	825*280*280
WQP800-15-55	800	15	12	75	55	0-5000	825*280*280

HYDRAULIC POWER STATION

CMP mobile hydraulic power unit provides a convenient and reliable power source for various hydraulic tools. It has the characteristics of high work efficiency, small size, light weight and strong power.

A hydraulic power unit can connect and drive various forms of hydraulic tools, such as hydraulic breakers, hydraulic circular saws, hydraulic chain saws, hydraulic pumps, etc., to complete various tasks.



PRODUCT FEATURES

The CMP hydraulic power unit can be set up with single circuit or double circuit, which can be set freely according to the oil supply and pressure of the equipment used, with reliable and stable operation and low noise.

1. All moving parts work in a relatively closed hydraulic oil environment, and it is difficult for dirt to enter. This not only ensures that the maintenance of the hydraulic power station is simple, the failure rate is low, and the service life is long.
2. The equipment is compact in structure and light in weight. It can be placed in a small tool cart, so it is easy to transport.
3. Diesel engine and gasoline engine can be selected according to customer requirements. The equipment is equipped with a large-capacity hydraulic oil tank and an efficient cooling system to make the machine work continuously for a long time.
4. The steel frame and foldable handle have good vibration resistance, and the machine is also very stable when it is running under load.
5. External hydraulic filter, easy to replace.
6. There is a one-key stop button, which can quickly stop in case of emergency to ensure the safety of personnel and machinery and equipment.
7. Equipped with a working hour meter, which is convenient for maintenance.
8. The fuel tank is equipped with an electronic fuel gauge display, which can monitor the fuel quantity in real time.

PORTABLE HYDRAULIC POWER UNIT

FIELDS OF PRODUCT APPLICATION

Municipal emergency repair and drainage, urban flood control and drainage, inspection well and sewer pipe cleaning and sewage discharge, construction site drainage: water intake from rivers, ditches, and lakes for drought resistance, fire fighting, water supply, sea water extraction, explosion-proof areas, etc.



PARAMETER TABLE



Single circuit hydraulic power pack /CMP13

Dual circuit hydraulic power pack /CMP18

Dual circuit hydraulic power pack /CMP35

Model	Flow (LPM)	Pressure(bar)	Weight(KG)	Size(MM)	Hydraulic tank (L)	Fuel tank (L)	
CMP13	20-30	145	115/123	860*690*750	17.6	17.6	Gasoline/ Diesel
CMP18	30-40 {2* (15-20) }	155	145/165	980*780*710	18	20	Gasoline/ Diesel
CMP23	40-50 {2* (20-25) }	155	145	980*780*710	18	20	Gasoline
CMP27/28	50-60 {2* (25-30) }	165	175	1180*780*830	21	26	Gasoline
CMP35	60-80 {2* (30-40) }	172	197/216	1180*780*830	21	26	Gasoline/ Diesel
CMP80	120-160 {2* (60-80) }	195	335				Diesel
							Gasoline/ Diesel

The above products can be assembled with gasoline engines and diesel engines of the specified brands according to customer needs

HYDRAULIC POWER
UNIT (G SERIES)

Product Model: CMP (G series)

CMP (G) is a fixed and moveable hydraulic power unit, which provides a convenient and reliable power source for various hydraulic equipment. It has the characteristics of high work efficiency and stable work.

One hydraulic power station can be connected to drive various forms of petrochemical hydraulic drilling rigs, mine crushing, large hydraulic pumps, hydraulic drives and other equipment.

FIELDS OF PRODUCT
APPLICATION

Petrochemical industry, mine crushing, large hydraulic equipment, fixed hydraulic pump drainage pump station, fire extinguishing water supply, seawater pumping, explosion-proof area, etc.



PRODUCT FEATURES

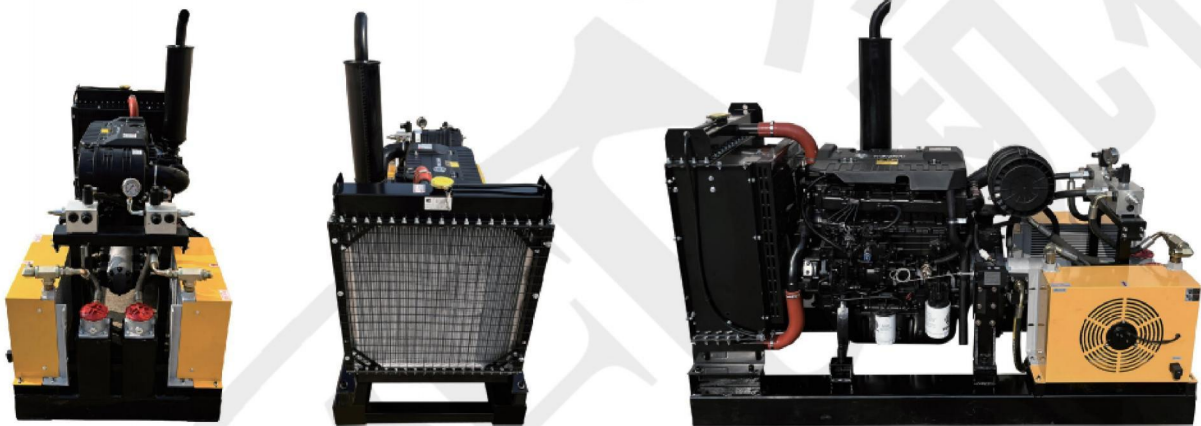
CMP (G) hydraulic power station can be set up with single circuit or multi-circuit, which can be set freely according to the oil supply and pressure of the equipment used, with reliable and stable operation and low noise.

1. All moving parts work in a relatively closed hydraulic oil environment, and it is difficult for dirt to enter. This not only ensures that the maintenance of the hydraulic power station is simple, the failure rate is low, and the service life is long.
2. The equipment has compact structure and stable operation. It can be placed in a tool cart or equipped with a fixed hydraulic pump station.
3. Driven by a diesel engine, equipped with a large-capacity hydraulic oil tank and an efficient cooling system, the machine can continue to work for a long time.
4. The skid frame is made of steel, which has good vibration resistance, and the machine is also very stable when it is running under load.
5. External hydraulic filter, easy to replace.
6. There is a one-key stop button, which can quickly stop in case of emergency to ensure the safety of personnel and machinery and equipment.
7. Equipped with a working hour meter, which is convenient for maintenance.
8. The fuel tank is equipped with an electronic fuel gauge display, which can monitor the fuel quantity in real time.

PRODUCT MODEL: CMYP - CMPG

FIELDS OF PRODUCT APPLICATION

Petrochemical industry, mine crushing, large hydraulic equipment, fixed hydraulic pump drainage pump station, fire extinguishing water supply, seawater pumping, explosion-proof area, etc.



PRODUCT FEATURES

CMYP (G) hydraulic power station can be set up with single circuit or multi-circuit, which can be set freely according to the oil supply and pressure of the equipment used, with reliable and stable operation and low noise.

1. All moving parts work in a relatively closed hydraulic oil environment, and it is difficult for dirt to enter. This not only ensures that the maintenance of the hydraulic power station is simple, the failure rate is low, and the service life is long.
2. The equipment has compact structure and stable operation. It can be placed in a tool cart or equipped with a fixed hydraulic pump station.
3. Driven by a diesel engine, equipped with a large-capacity hydraulic oil tank and an efficient cooling system, the machine can continue to work for a long time.
4. The skid frame is made of steel, which has good vibration resistance, and the machine is also very stable when it is running under load.
5. External hydraulic filter, easy to replace.
6. There is a one-key stop button, which can quickly stop in case of emergency to ensure the safety of personnel and machinery and equipment.
7. Equipped with a working hour meter, which is convenient for maintenance.
8. The fuel tank is equipped with an electronic fuel gauge display, which can monitor the fuel quantity in real time.

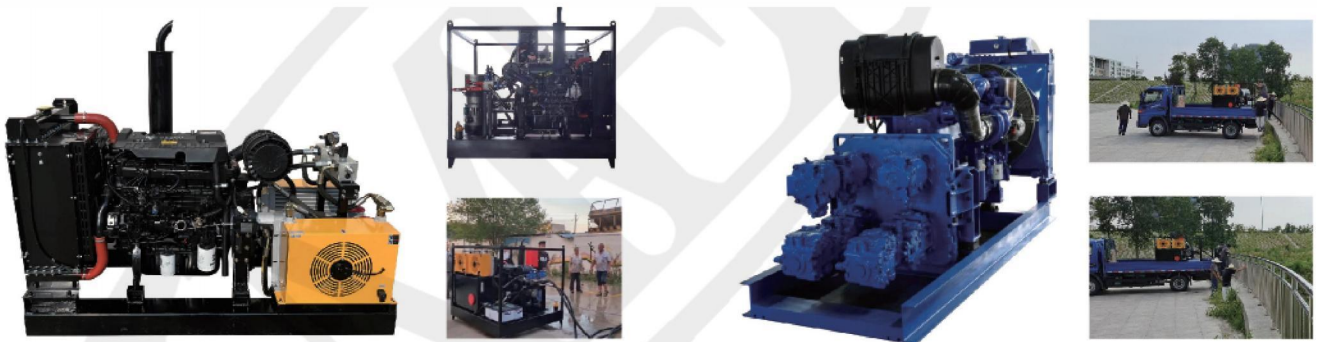
HYDRAULIC POWER STATION

HYDRAULIC POWER UNIT (G SERIES- SKID TYPE)

Skid-Mounted Hydraulic Power Unit Series I

Parameters	CMPG45	CMPG76	CMPG90	CMPG110
Flow rate (L/min)	80-100	160-180	180-200	220-240
Pressure (bar)	180	180	200	200
Weight (kg)	580	780	950	1035
L*W*H (mm)	1800*800*1070	1800*800*1070	1840*1410*1560	1840*1410*1560
Hyd. tank (L)	100	100	300	300
Fuel Tank (L)	80	80	120	120
Start Method	Electric Start	Electric Start	Electric Start	Electric Start
Diesel Engine	Wechai	Wechai	Commins / Wechai	Commins / Wechai

● (Steel frame)
 ● (Skid-mounted)
 ● (The Engine can be customized according requirements)



Skid-Mounted Hydraulic Power Unit Series II

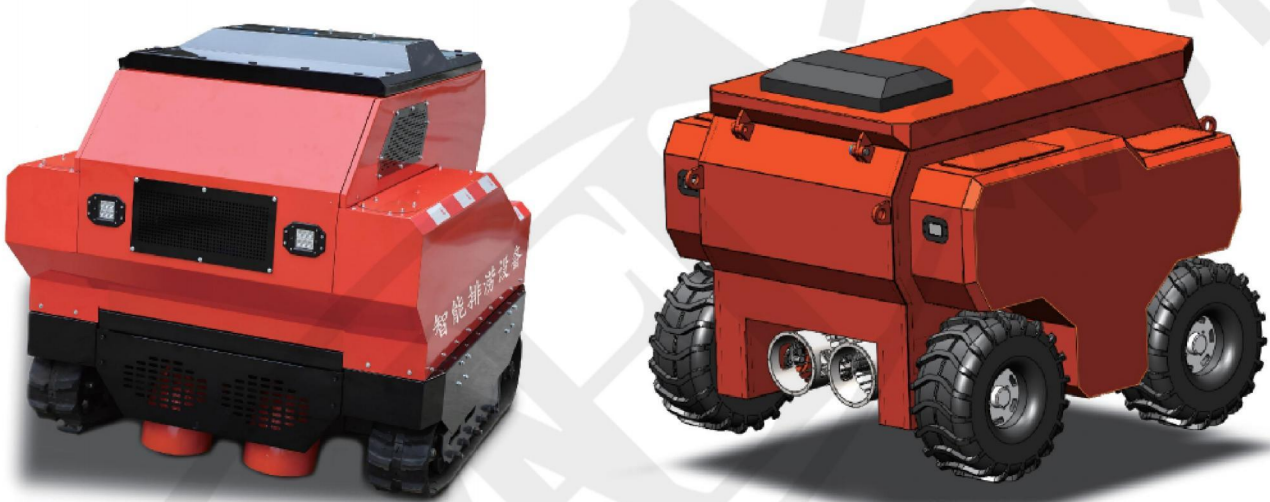
Parameters	CMYP310	CMYP550	CMYP600
Flow rate (L/min)	540-680	680-1060	760-1120
Pressure (bar)	160-200	200-300	200-300
Weight (kg)	1986	2868	3780
L*W*H (mm)	2880*1050*1550	3000*1100*1650	3050*1100*1600
Hyd. tank (L)	400	580	680
Fuel Tank (L)	380	Vehicle fuel tank	Vehicle fuel tank
Start Method	Electric Start	Electric Start	Electric Start
Diesel Engine	Cummins	Cummins	Cummins

● (Skid-mounted)
 ● (The Engine can be customized according requirements)

INTELLIGENT DRAINAGE EQUIPMENT

CMRP intelligent drainage equipment is a special intelligent drainage equipment developed for urban emergency rescue. It can choose crawler type (w type) or wheel type (v type) walking mechanism according to customer requirements.

It is widely used in the drainage of tunnels, underground garages, subways and other places during urban waterlogging. The equipment is highly mobile, and can rush to the scene and perform drainage operations in the first time to achieve the purpose of pumping and drainage. The equipment can be equipped with a portable hose storage machine according to customer requirements, and the hose can be quickly laid on site for drainage operations.



PRODUCT FEATURES

1. CMRP intelligent drainage equipment adopts aviation high-efficiency diesel engine as the power source, and uses hydraulic transmission system to control two large flow pumps used by drainage robots for urban garages, subway stations, tunnels, culverts, urban narrow roads and other places for drainage and rescue. When heavy rain occurs in the city and exceeds the city's own drainage limit for a long time, causing serious water storage in underground garages, subways, tunnels, etc., the drainage equipment can realize rapid flood drainage and rescue in emergency rescue.

INTELLIGENT CRAWLER SLURRY DRAINAGE EQUIPMENT

PRODUCT MODEL: CMW (I)

CMW (I) intelligent slurry discharge equipment is a special intelligent slurry discharge equipment developed for urban emergency rescue. It is equipped with off-road crawler driving mechanism and can work underwater.

It is widely used in the remaining water and mud after drainage in tunnels, underground garages, subways and other places during urban waterlogging. The equipment is movable, so it can arrive at the site at the first time and perform drainage and mud discharge operations to achieve the purpose of drainage and mud discharge.



PRODUCT FEATURES

1. CMW (I) intelligent slurry discharge equipment adopts our company's hydraulic power station equipment as the power source to drive two slurry pumps for sludge drainage and rescue in urban garages, subway stations, tunnels, culverts, and urban narrow roads. When heavy rain occurs in the city and exceeds the city's own drainage limit for a long time, resulting in serious water storage in underground garages, subways, tunnels, etc., this equipment can realize the task of mud drainage in the middle and late stages of emergency rescue.

2. This equipment is very mobile, and it can be pumped and transported to a safe area hundreds of meters away. It is especially suitable for urban underground garage drainage, underground passages (steps can be stepped down), expressway tunnels, culverts, subways, factories and mines, and other low-rise areas. Drainage and mud discharge occasions in low environment and unsuitable for personnel to enter.

3. Compared with traditional drainage equipment, this intelligent drainage equipment has the following advantages: large mud discharge flow, not easy to block, and long conveying distance; the crawler walking of the pump truck and the water pump drive are all hydraulically driven, and the operation is stable, and there is no traditional water pump. Potential electrical safety hazards, the crawler walking of the pump truck and the drainage of the water pump are operated by wireless remote control, with a remote control radius of 500 meters, which is safe and reliable; personnel are prohibited from entering the dangerous area, but the drainage robot can normally enter the work site to carry out mud and drainage operations.



Caimei Machinery Manufacturing (Shanghai) Co., Ltd
(Hotline) : 021-57581113
(Website) : www.pspumps.com

No. 38 Hu Ruan Road, Fengxian District, Shanghai, CN